

# 18 ELS PESSONS

## DON'T MISS...

a visit to Casa Cristo, which offers you the unique opportunity to see how it was to live in a humble Andorran home from the 19th century to middle of the 20th century.

## DID YOU KNOW?

By digging up and studying plant and small invertebrate animal sediment from the bottom of the lake, scientists have been able to discover what past environmental conditions were like.

## TOPONYMY

**Pessons:** Stack, grass stack, straw and, by extension, rocky terrain. Here it is used to refer to the glacial deposits of the cirque and alluvial terraces of this type.

HIKING IN ANDORRA



Cap dels Pessons lake



Landmark



Coal tit  
(*Parus ater*)



White water buttercup  
(*Ranunculus aquatilis*)

Within the parish of Encamp, the valley that opens to the right and leads to Port d'Envalira, heading toward France, hides a very interesting route through a series of interconnected lakes, with unnamed lakes, streams, rocky cliffs, large meadows and wide panoramic views, all nestling in the heart of the largest granite glacial cirque in Andorra. The GR-7 and GRP share a path through this cirque, which has peaks higher than 2,700 metres, as is the case of Pessons pass (2,816 m).

These landscapes are populated with the beaked sedge (*Carex rostrata*), and the lakes teem with white water buttercups (*Ranunculus aquatilis*), which fill them with white when in

bloom. Among the woody vegetation, it is easy to hear small birds like the chiffchaff (*Phylloscopus collybita*) or the great tit (*Parus ater*).

This hike is possible for anyone to do, allowing both the most cautious and the most adventurous to enjoy the views of Pessons cirque, as it is easily accessible and with quite varied landscapes.

If you would like to do the complete route, keep in mind that with a change of altitude of 700 metres and six kilometres of hiking until Pessons pass, this route is only for fairly prepared hikers, although the steepest incline is at the start.

# 18

### DATA SHEET

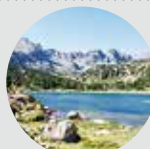
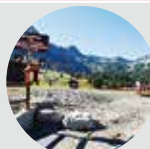
- ● ● ●
- 3H
- 2H
- +707 M
- 5.950 M
- NO
- APPROXIMATE WALKING TIMES

### ROUTE SIGNPOSTING

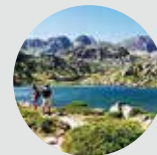
- GRP
- GR 11
- WRONG WAY



LOCATION HEIGHT	DISTANCE DROP	TIME	COORDINATES	DESCRIPTION
<b>1</b> PATH 2.103 m	-- (--)	--	N42 31.913 E1 41.855	To reach Pessons cirque, go up to the Grandvalira ski resort, in the Grau Roig area. Once in the car park at El Cubil, take the forest path heading west.
<b>2</b> FIRST LAKE 2.300 m	1.580 m (+197 m)	35'	N42 31.550 E1 41.301	Follow the path until the first lake, where you'll find a restaurant called Refugi del llacs de Pessons. Another option is to do this stretch of the route in a 4x4 vehicle.
<b>3</b> INTERSECTION 2.300 m	1.800 m (0 m)	40'	N42 31.448 E1 41.336	Take the GRP heading south. The path follows along the left side of the lake until you reach an intersection.



LOCATION HEIGHT	DISTANCE DROP	TIME	COORDINATES	DESCRIPTION
<b>4</b> FORCAT LAKE 2.365 m	2.450 m (+65 m)	1h	N42 31.413 E1 40.987	Leave the path on the left, going to Montmalús peak, and take the GRP and GR-7, which continue on the south side of the first lake. Follow the marks of the GR-7 (white and red) until you reach Forcat lake.
<b>5</b> RODÓ LAKE 2.375 m	2.740 m (+10 m)	1h 10'	N42 31.364 E1 40.830	Keep on the path, always being sure to follow the marks of the GR. A little after passing a pond, you'll come to Rodó lake, which provides your first views of Pessons cirque.
<b>6</b> MELIGAR LAKE 2.440 m	3.470 m (+65 m)	1h 30'	N42 31.137 E1 40.486	The route gradually goes up some 200 metres until you reach the fourth lake in the Pessons area, Meligar lake. Take a moment and look over the peaks surrounding you.
<b>7</b> LES FONTS LAKE 2.495 m	4.250 m (+55 m)	1h 50'	N42 31.009 E1 40.039	The path goes around the north side of Meligar lake and continues past some granite scree until you reach an unnamed lake. Further on, you'll find Les Fonts lake.
<b>8</b> CAP DELS PESSONS LAKE 2.605 m	5.110 m (+110 m)	2h 20'	N42 30.758 E1 39.778	From here, the path goes up straighter. In this area it is normal to hear the whistling of marmots. The route continues and passes above the last lake on the route, Cap dels Pessons lake.
<b>9</b> PESSONS PASS 2.810 m	5.950 m (+205 m)	3h	N42 30.560 E1 39.523	The route winds steadily up until you reach Pessons pass. At this point you can enjoy panoramic views of the Arinsal mountains on one side and of the other peaks of Pessons cirque on the other.



### ROUTE PROFILE

