

63 LA MAIANA PASS ROUTE

HIKING IN ANDORRA



DON'T MISS...

the opportunity to visit fishing zones and take advantage of the quotas offered by Andorra, with which you can catch up to 8 fish per person. More information is available at tourist offices.

DID YOU KNOW?...

The tirador is one of the most common structures in Andorra. It is an enclosure made of dry stone with two parallel metre-high stonewalls forming a fairly narrow 50-meter long corridor.

TOPONIMY

Maiana: Old form of the Catalan word *mitjà*, meaning "middle"; the point between two well-defined extremes or places. It can also refer to division between two different properties or possessions.



Orris de Mateu



Madriu river



Farga cabin



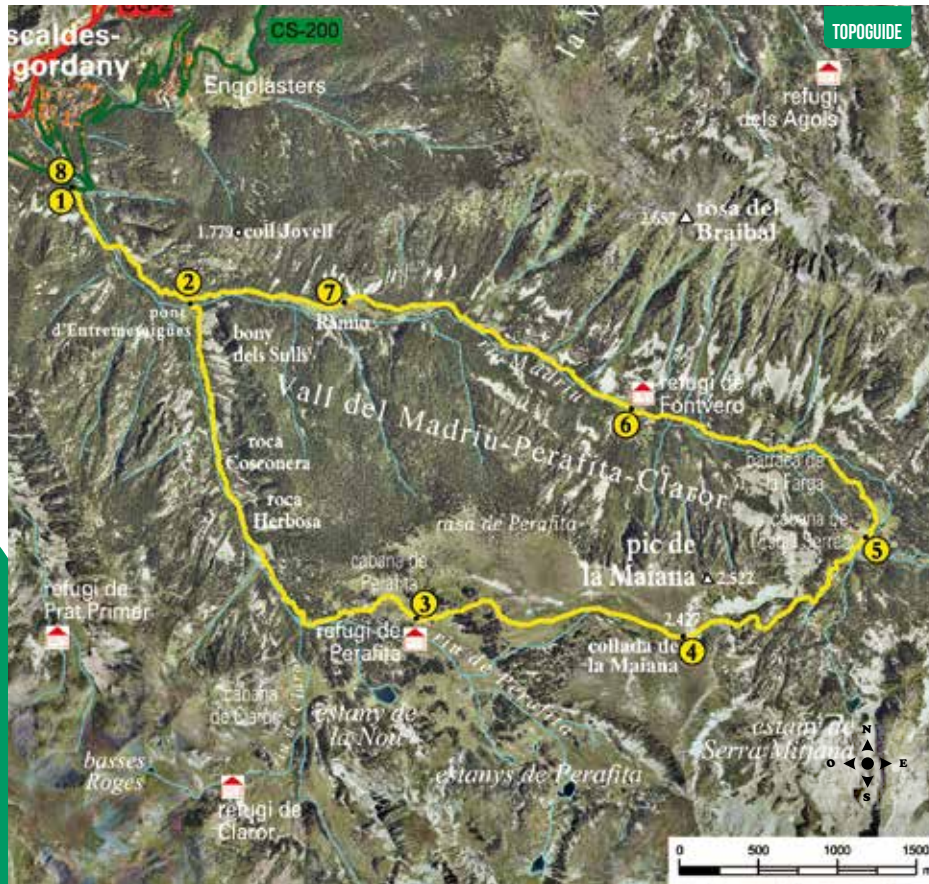
Estall Serrer walkway

The Maiana route is one of the most spectacular routes in the Madriu-Perafita-Claror valley, as it passes by Entremesaigües, the Perafita refuge and Maiana pass, with the option of visiting Nou lake. On the way down, you'll pass by the Fontverd and Ràmio refuges (typical groupings of huts found in Andorra).

The changing and varied silhouette of the Madriu-Perafita-Claror valley offers a long list of possible mountain activities for hiking enthusiasts. In winter you can ski, and come summer there is rock climbing and hiking.

Apart from the roads created to support the inhabitants in the Madriu area, there are two long-distance paths (GR) that cross the valley, along with the GRP trail designed by the Andorran Mountaineering Federation (FAM). Running at more than 100 kilometres, this trail follows the country's entire crest line and has five stages.

On the journey you will find the Fontverd and Perafita refuges, as well as the cabins in Estall Serrer, La Farga and Perafita.



TOPOGUIDE

DATA SHEET

-
- 5H 20 MIN
- +1.190 M
-1.190 M
- 15.730 M
- YES
- APPROXIMATE WALKING TIMES

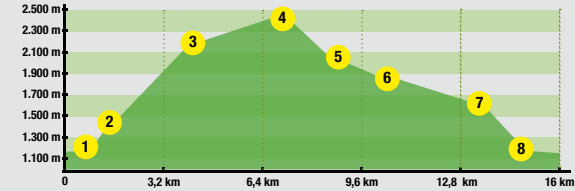
ROUTE SIGNPOSTING

- GR 7 / 11 / 11.10
- WRONG WAY



escaldes-engordany

ROUTE PROFILE



LOCATION HEIGHT	DISTANCE DROP	TIME	COORDINATES	DESCRIPTION	
4 MAIANA PASS 2.425 m	6.900 m (+225 m)	3h	N42 28.733 E1 35.908	From the refuge it is possible to visit the beautiful Nou lake, 1 kilometre to the south. To continue on with the route, follow the GRP on the northeast side of the refuge. The path will climb and then level off until you reach some of the most panoramic views on the route, over Maiana Pass.	
5 ESTALL SERRER CABIN 2.060 m	8.640 m (-365 m)	3h 50'	N42 29.078 E1 36.746	Heading down towards the Madriu river, you'll hike through forests and alpine meadows. The last, normally wet, downhill slope takes you directly to the Estall Serrer cabin.	
6 FONTVERD REFUGE 1.885 m	10.940 m (-175 m)	4h 10'	N42 29.509 E1 35.661	Leaving the cabin behind and following the GRP, you'll pass over some bridges until running into GR-7 and GR-11, (longdistance paths). Take them westerly down through the valley until you reach the Fontverd refuge.	
7 RÀMIO 1.616 m	13.400 m (-269 m)	4h 45'	N42 29.865 E1 34.328	In front of the refuge, you'll continue following the GR for a nice stroll along the Madriu river. Before reaching Ràmio, you will come to a GR intersection. You'll want to continue downwards towards the Madriu until finally coming upon the huts at Ràmio.	
8 LA PLANA ROAD 1.235 m	15.730 m (-381 m)	5h 20'	N42 30.253 E1 33.059	Passing by Ràmio, you will come to the huts at Entremesaigües. Continuing downwards, you'll return to your starting point.	

LOCATION HEIGHT	DISTANCE DROP	TIME	COORDINATES	DESCRIPTION	
1 LA PLANA ROAD 1.235 m	-- (--)	--	N42 30.253 E1 33.059	To reach the starting point, you follow the Engolasters road (CS-200) from Escaldes-Engordany. Passing the 1 km mark, turn right to enter La Plana road. You'll follow this for 100 metres until the starting point, where you will find some information signs.	
2 ENTREME- SAIGÜES BRIDGE 1.465 m	1.200 m (+230 m)	35'	N42 29.868 E1 33.616	On a paved road, you'll hike through the lower part of the Madriu Valley until you reach a group of huts at Entremesaigües. At this point, turn right and after a gentle slope, you'll cross the Madriu river.	
3 PERAFITA REFUGE 2.200 m	4.900 m (+735 m)	2h 10'	N42 28.779 E1 34.688	Keep on through the valley and pass close by Perafita cabin. The path continues on the left through a forest until you come to a clearing. Up a incline, you'll reach the Perafita plateau and to the southeast you'll find the Perafita refuge.	