

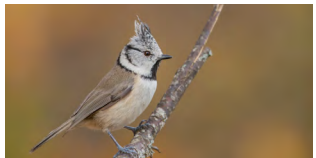


**FIELD NOTEBOOK**  
**Soak up the scenery  
 of THE MADRIU-  
 PERAFITA-CLAROR  
 VALLEY**  
**RÀMIO Route**

Discover me!

**Scots pine woodland**

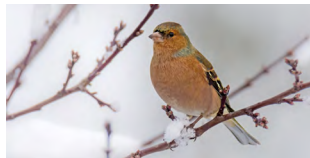
Lots of birds live in this Scots pine woodland, where they feed on pine cones or plants on the forest floor, like snow-rose or bilberry. If you look very carefully and quietly, you may see some of the animals below. Tick those that you see or hear.



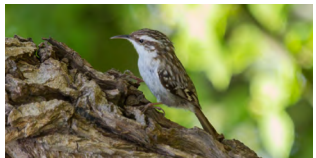
Crested tit



Goldcrest



Chaffinch



Short-toed treecreeper



Great tit



Black woodpecker

Discover me!

**Les Fonts circuit view point**

After crossing the tunnel, you'll come across a view point where you can see a spectacular view across Andorra's central valley. Take the opportunity to snap some pictures and stick them here.

Do you know what the church in front of you is called?

What is the highest peak that you can see from here? How high is it?



Action!

**Following the life of a pine tree**

As you wander through the valley, you'll find lots of pine trees. Why not gather a few seeds from a pine cone and plant them? Be careful as you plant them and take photos or record a video as they grow.




Why not....?

Share your Madriu-Perafita-Claror valley experience on social media and tag your photos with the hashtag #vallmadriuperafitaclaror.

# Be prepared!

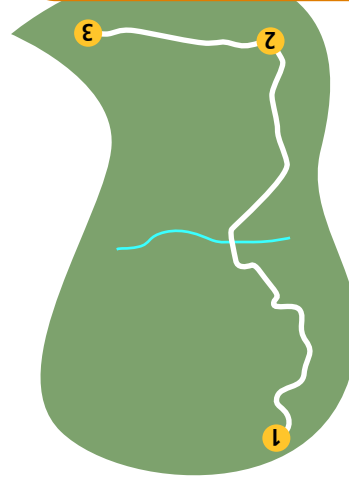
Hello there, explorer!

My name is Mena and I'm a fox. I live in the Madriu valley and I'm very curious. That's why I travel up and down the valley getting to know stories from the past. **Keep your eyes peeled and enjoy this beautiful valley full of surprises!** I'll see you out there!

- 1 Les Fonts Circuit
- 2 Jovell Hill
- 3 Rámio



To come with me on an adventure, don't forget to wear/bring: **comfy shoes, a full water bottle, something to eat** along the way and **sun protection**. You'll also need: **a pencil and colouring crayons, a pair of binoculars** and the **bird song recordings** you've prepared at home.



## Discover me!

This path is also known as **Camí dels Matxos** (mule track). Why do you think it's called that?

## The old Engolasters hydroelectric route

In the middle of the 20th century, a huge network of canals was built to make the most of the water from the Madriu river and produce hydroelectric energy. Put together a report of the evidence of this canal network that you find along the way. Stick your photos here.



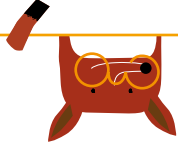
## What does someone who works in silviculture do?

Since ancient times, the inhabitants of this valley have explored the woodland to extract natural resources like wood, making sure not to damage the surroundings. If you worked in silviculture, what tasks would you need to do? Choose the correct answers.

- 1 Plant lots of trees at once.
- 2 Clear the weakest young trees that are least resistant to wind and snow.
- 3 Cut down all the big trees to use their wood.
- 4 Maintain the strongest and most developed trees.
- 5 Conserve parent trees to scatter their seeds.

## Did you know...?

Silviculture is the cultivation of woodland. Techniques that respect the natural woodland ecosystem are now used.



## Discover me!

## Discover me!

## Rocks among the greenery

Along the way, you'll have come across **scree**. Scree is a collection of broken rock fragments that you can find on some mountain slopes.

How do you think they got here?



## Did you know...?

**Granite** is made up of small grains of quartz, feldspar and mica. It's very hard and strong, which is why it's used in construction. You can find it in some buildings in the valley.

