

36 COLL DE LES CASES ROUTE (COMAPEDROSA NATURE PARK)

DON'T MISS...

sampling wild strawberries (*Fragaria vesca*), which you will find in many places at the start of the route in the months of July and August.

DID YOU KNOW?

coll de les Cases was an ancient passageway between the Arinsal and Ordino valleys.

TOPONYMY

Coll de les Cases: From the Latin *collu*, meaning "mountain, hill, of not very high elevation". The Catalan word *coll* has come to designate a pass between mountains.



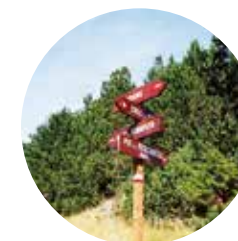
La Capa highlands



Cuckoo (*Cuculus canorus*)



Anthill



This simple two-hour route provides great views of the north face of Casamanya peak, located in the parish of Ordino, which you can visit with data sheet number 8 in this guide.

The most common animals in this area include the cuckoo (*Cuculus canorus*), the crag martin (*Ptyonoprogne rupestris*), the common redstart (*Phoenicurus ochruros*), the coal tit (*Parus ater*), the chaffinch (*Fringilla coelebs*), the citril finch (*Serinus citrinella*), the linnet (*Carduelis cannabina*) and the common crossbill (*Loxia curvirostra*). Mention must also be made of the European hare (*Lepus europaeus*), roe deer (*Capreolus capreolus*) and red fox (*Vulpes vulpes*), which you may spot very early in the morning, or the asp

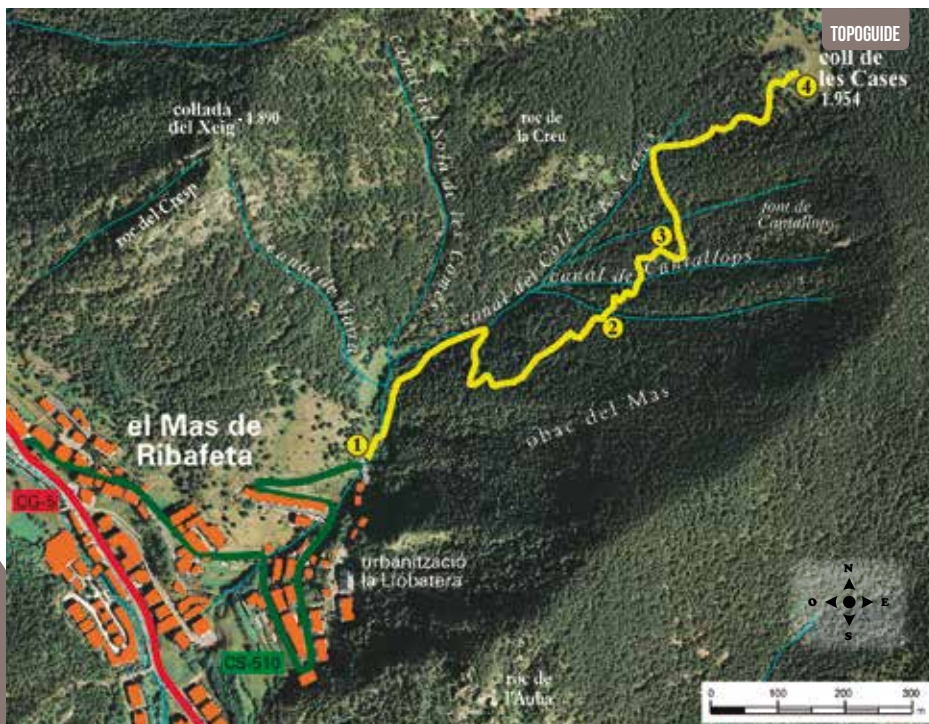
viper (*Vipera aspis*) and smooth snake (*Coronella austriaca*), among others, later in the day.

The cuckoo (*Cuculus canorus*) is widely present in the valleys on Andorra. Its highly characteristic, monotonous song is one of the most commonly heard ones in the country's forests. This is a summer bird, and can be spotted mainly between the months of spring and summer. It generally arrives in April and leaves in August or September.

This small species lives in forest settings, such as forests of mountain pine (*Pinus uncinata*) and Scots pine (*Pinus sylvestris*), as well as deciduous woods of Mediterranean holm oak (*Quercus ilex*) in exceptional locations (*Padern peak*).

LA MASSANA

36. COLL DE LES CASES ROUTE



DATA SHEET

- 1H 40 MIN
- 1H
- +493 M
- 2.930 M
- NO*
- APPROXIMATE WALKING TIMES


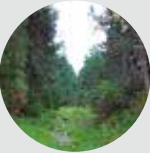

ROUTE SIGNPOSTING

- GR 11
- WRONG WAY




La Massana



LOCATION HEIGHT	DISTANCE DROP	TIME	COORDINATES	DESCRIPTION
1 COLL DE LES CASES PATH SIGN 1.535 m	-- (--)	--	N42 34.249 E1 29.555	Before reaching the town of Arinsal, take the path that forks off towards El Mas de Ribafeta. Follow the road until it ends and park there. Follow GR11 indications along the Carretera de les Feixes road (CS-510). Not far after kilometre 1 you'll see a signpost for the Camí del Coll de les Cases path. 
2 CANAL 1.725 m	1.690 m (+190 m)	50'	N42 34.370 E1 29.816	The path climbs fairly straight along the Coll de les Cases canal, and then changes direction heading south. Continue ascending, making zig-zags under the shadow of El Mas de Ribafeta until you arrive at the Cantallops canal. 
3 OLD TRUNK 1.785 m	1.880 m (+60 m)	1h 05'	N42 34.414 E1 29.885	Continue ascending through the forest until you come upon a curious dried-out trunk in the middle of the path. This is a good time for taking a brief pause before setting out on the final stretch. 



LOCATION HEIGHT	DISTANCE DROP	TIME	COORDINATES	DESCRIPTION
4 COLL DE LES CASES 1.954 m	2.930 m (+169 m)	1h 40'	N42 34.563 E1 30.021	The path continues straight ahead until you reach Coll de les Cases, which is the destination of this route. Stopping here allows you to enjoy a lovely view of the mountains of Ordino and la Massana. 

* You can return by following the same route. Another option would be to continue on the GR-11 until Arans. In this case, you will need to provide for an additional means of transport.

ROUTE PROFILE

