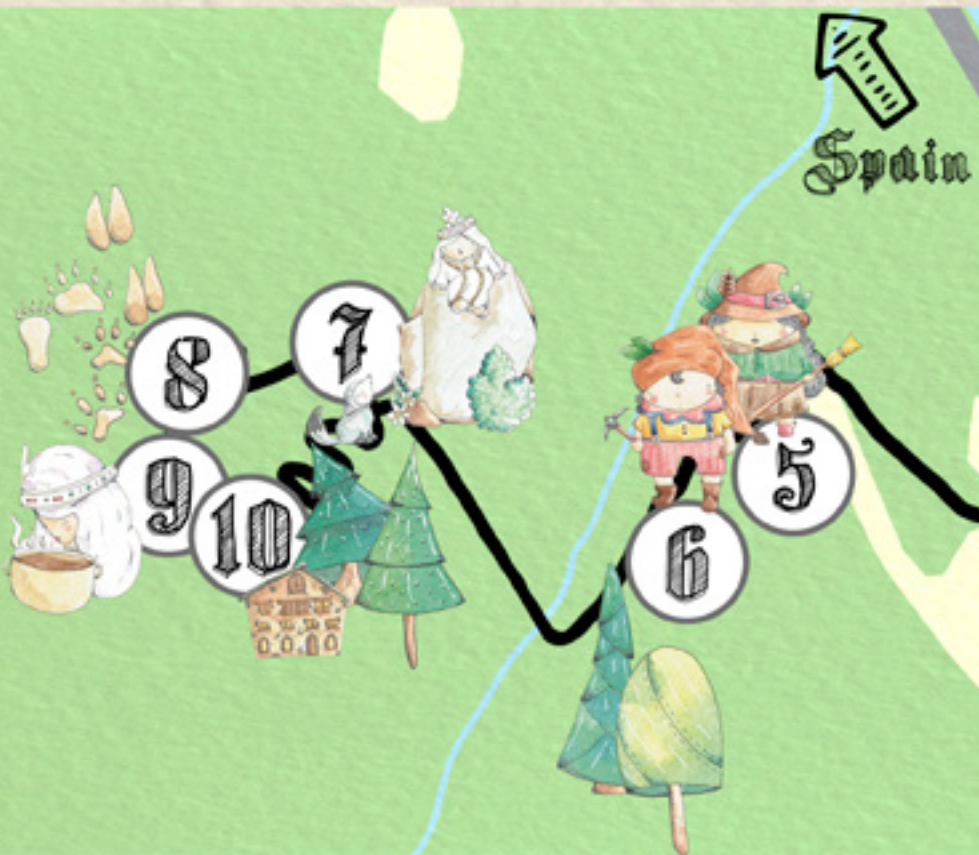


**Sant Julià  
Màgica**



*Sant Julià de Lòria*



## ROC DE LA SENYORETA

### How to get there

Ctra. General 1, km 8.5

La Ribera, AD600, Sant Julià de Lòria

(The trail starts in front of River shopping centre on the road to Spain)

The start of the trail is 1.8 km (23 minutes) from the Tourist Office in Sant Julià de Lòria. Take the pavement on the left-hand side and you will cross a metal boardwalk just before the start of the trail.

### Coordinates:

42,45298 N 1,48693 E



# Sant Julià Màgica

## Trail information

- △ Difficulty: moderate
- W→ 3 km
- ▲ 250 m elevation gain
- ⊙ Time: 3 hrs approx.



Sant Julià  
de Lòria



## Guidelines



Follow the marked trail.



Wear mountain footwear.



Carry water and food.



Throw rubbish in the bins.



Check the weather forecast.



Respect the route signs and features.



Respect the surrounding vegetation and constructions.



Be careful with fire.



Unsuitable for people with reduced mobility.



Children should always be accompanied.



Recommended for children over the age of 8.

## How to use this booklet

Through this booklet and the different features along the trail, you can learn all the secrets of the legend of the WHITE LADY.

Complete the tasks that you find from here on...



We are going to visit a place called **Roc de la Senyoreta**, the site of one of the **most popular Andorran legends, the White Lady**, also called La Senyoreta.

La Senyoreta was a magical being, like a fairy, who lived in a tower in the village of Auvinyà. She was always dressed in white and used her special powers to defend this country and its people from potential invaders. She did this by appearing on a rock, where she watched over the entrance to the valley – the rock we are about to visit.

According to legend, a terrible warrior arrived from the south, a Saracen king who conquered lands with his army. One day, he reached Sant Julià de Lòria, the gateway to the valleys of Andorra, at the head of his soldiers and planning to invade this country.

Would you like to hear the legend of the White Lady and what happened next?



The White Lady is the **protector of this country and also protects and conserves nature**. She asks you to take your rubbish away with you and, if you find anything left behind by other people, please remove that too!



While you are on the trail, you should also collect **four natural elements** which, when offered to the White Lady, will release their scent for you to smell.

**These are: a sprig of boxwood, the prickly case of a chestnut, an oak leaf and a pinecone.**

Just when the Saracen king was about to enter the valleys of Andorra, the White Lady appeared to him on a rock above the valley - Roc de la Senyoreta. From there, she gave him a warning: if he entered Andorra, he would receive a terrible punishment. He was scared and went away again.

2



Any one of these three characters could be the one who wanted to invade Andorra in the legend. What do all three figures have **in common**?

After a while, the king began to think...  
Why did he let a woman scare him? He,  
a great warrior with a glorious army...



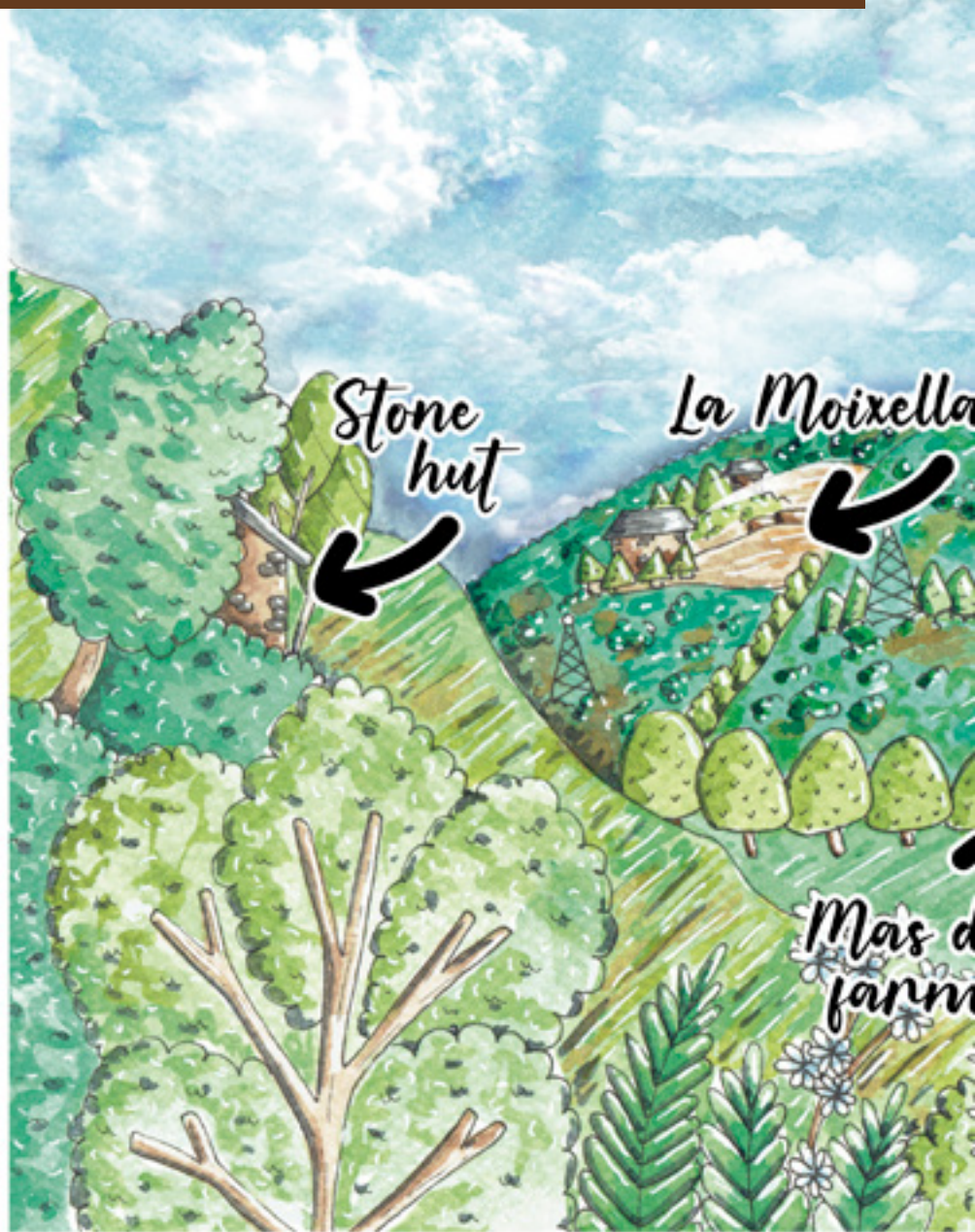
The legend of the **White Lady** happened in the Middle Ages, when knights fought with swords, like Saint George. So, **which of these soldiers** do you think the invader who wanted to enter this country?

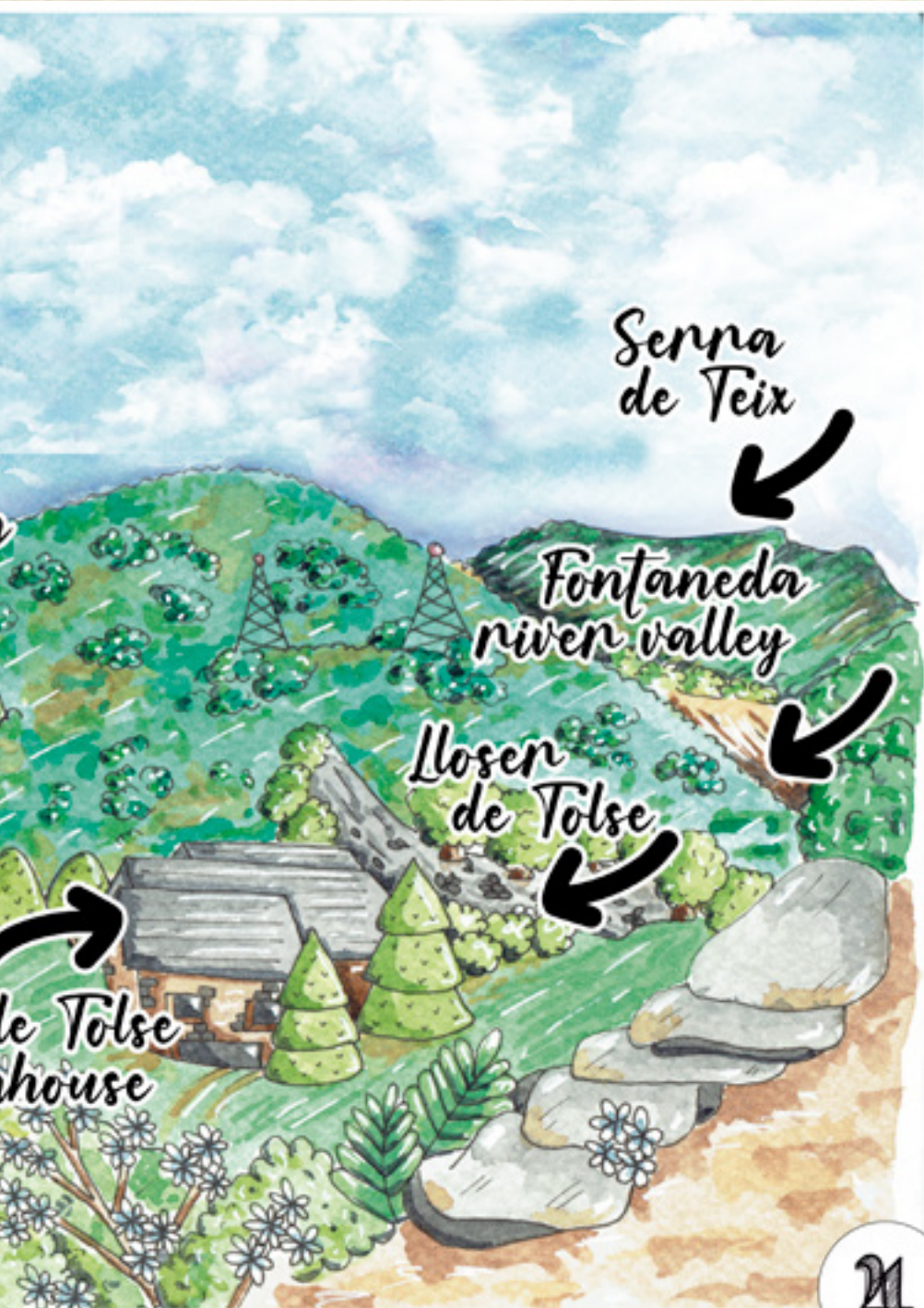


ts wore armour and  
i think accompanied

**WRITE YOUR ANSWER  
HERE:**

This is the landscape at the entrance to Sant Julià de Lòria, which the White Lady wanted to protect. Can you see the marked places?





Serra  
de Teix

Fontaneda  
river valley

Llorenç  
de Tolse

de Tolse  
house



The White Lady is not the only fantastical being that appears in the legends of Sant Julià de Lòria – there are others too. You can find them hiding among the trees:



**The White Lady**



**Witch**



**Menairó (elf)**



**Llimoi (demon)**



**Tamarro**



You are about to enter **La Senyoreta wood**, a shady wood full of pines, moss and boxwood. Can you find Roc de la Senyoreta among the pines in this picture?

6





Not long after the Saracen king disappeared, a ferocious wolf that could talk began to attack the flocks of sheep belonging to the people of this country. This was the Saracen king, who the White Lady had punished by turning him into a wolf, and who now wanted revenge. We have to find him.

Which of these could be the  
**wolf's** tracks?  
Look for him in the wood.



**WRITE YOUR  
ANSWER:**



9

We imagine that you have done what the White Lady asked you to do and collected the four natural elements along the way: a sprig of boxwood, the prickly case of a chestnut, an oak leaf and a pinecone.

Put them into the White Lady's cooking pot and you will **be able to smell their scent.**





Now that you have found the wolf in the wood, **let the lord know** so he can hunt it down. Go to his house and open all the windows and doors until you find him.

10

The wolf continued its evil deeds until the shepherds told a local lord and he hunted it down. But, from that day on, the lord began to suffer terrible nightmares in which he fought the wolf to the death. Nobody could cure him until the White Lady appeared and explained that the spirit of the wolf had possessed him. With a magic spell, she freed him from his nightmares.

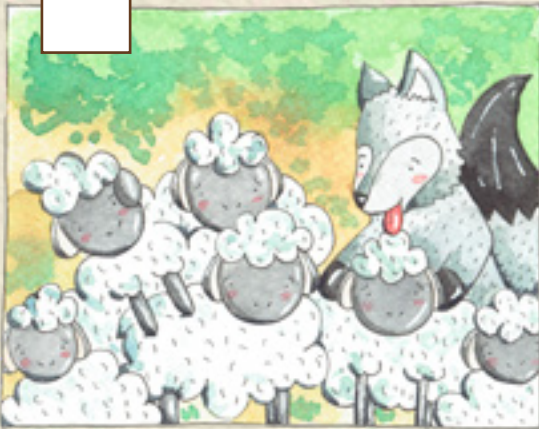




You now know **legend of the White Lady - La Sen**  
them up. Can you remember how the legend goes and put th

Number each of the pictures in order.

Now that you have visited the different places where the lege  
same path, from the junction below this rock. Remember th  
into the nearest bin when you leave the trail. Have a safe jour



**nyoreta.** Can you remember each episode? We have mixed  
the episodes in order?

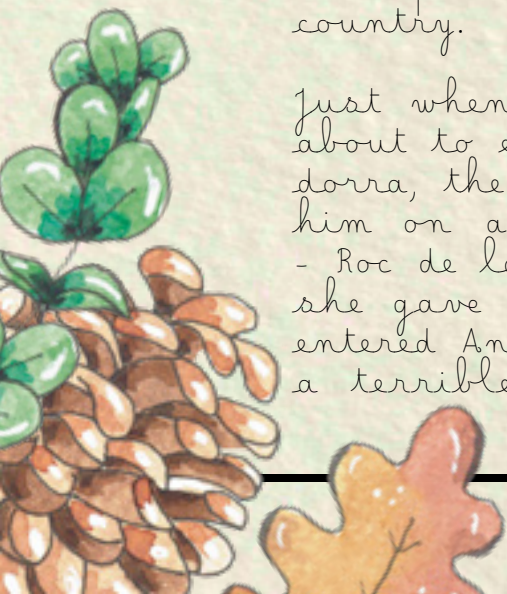
end took place, you can return to Sant Julià de Lòria along the  
at you promised the White Lady you would put any rubbish  
ney back!

# The Legend of the White Lady

La Senyoreta was a magical being, like a fairy, who lived in a tower in the village of Auvinyà. She was always dressed in white and used her special powers to defend this country and its people from potential invaders. She did this by appearing on a rock, where she watched over the entrance to the valley: Roc de la Senyoreta.

According to legend, a terrible warrior arrived from the south, a Saracen king who conquered lands with his army. One day, he reached Sant Julià de Lòria, the gateway to the valleys of Andorra, at the head of his soldiers and planning to invade this country.

Just when the Saracen king was about to enter the valleys of Andorra, the White Lady appeared to him on a rock above the valley - Roc de la Senyoreta. From there, she gave him a warning: if he entered Andorra, he would receive a terrible punishment. He was



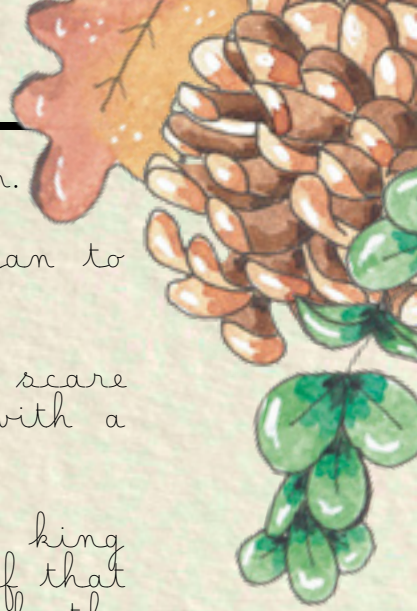
scared and went away again.

After a while, the king began to think...

Why did he let a woman scare him? He, a great warrior with a glorious army...

Not long after the Saracen king disappeared, a ferocious wolf that could talk began to attack the flocks of sheep belonging to the people of this country. This was the Saracen king, who the White Lady had punished by turning him into a wolf, and who now wanted revenge.

The wolf continued its evil deeds until the shepherds told a local lord and he hunted it down. But, from that day on, the lord began to suffer terrible nightmares in which he fought the wolf to the death. Nobody could cure him until the White Lady appeared and explained that the spirit of the wolf had possessed him. With a magic spell, she freed him from his nightmares.



# Answers

2

What do all three figures have in common?

**ANSWER:** The sword



3

Which of these accompanied the invaders to enter this country?

**ANSWER:** The soldiers in (numbers 3, 6 & 7)



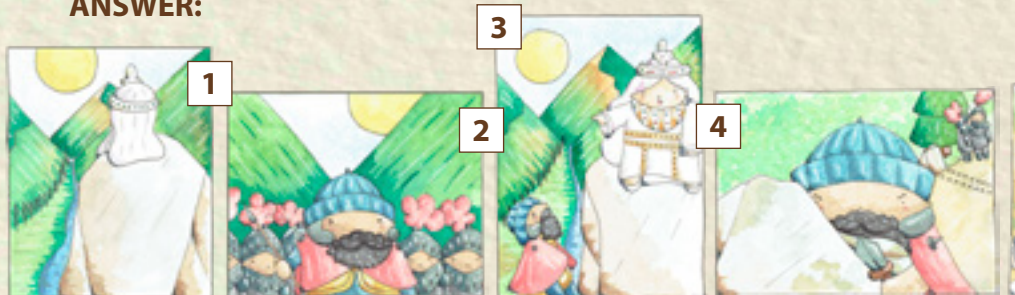
8

Which of these could be the White Lady? Look for him in the wood.

**ANSWER:** Tracks number 2

Now you know the **Legend of the White Lady - La Senyora Blanca** mixed them up. Can you remember how the legend goes and put the episodes in order?

**ANSWER:**



e soldiers  
er who wanted to

6

Can you find **Roc de la Senyoreta**  
among the pines in the picture?

n armour



e **wolf's** tracks?



**ANSWER**



**eta.** Can you remember each episode? We have  
episodes in order?

5



6



7



8



Now you know the legend and the heroine of the story, the **White Lady of Auvinyà**, protector of the valley.  
Draw your own picture of the White Lady in this space.





And you also know **the legend** well. Which was your favourite scene?  
You can draw it in this space.



**SANT JULIÀ  
DE LÒRIA**

*Love it*