

95 ITINERARI DE L'OBAGA

DON'T MISS...

A visit to the Carmen Thyssen Museum, a live museum that hosts a range of different exhibitions in its 250 m² space.

DID YOU KNOW...

That the Escaldes Engordany parish is the youngest of the seven parishes in Andorra, and was born after seceding from the former Andorra la Vella, back in 1978.

BEHIND THE NAME

Escaldes-Engordany: it most probably contains the article *Ipse*, given that ancient forms make reference to *Caldes*. Engordany, according to Coromines, is believed to originate from a Germanic name closely related to Guardans, a town near Ripoll.

WALKING IN ANDORRA



Trollius Europaëus



Lichen



Font Pixadera water spring



Aconitum Napellus

La Plana path, Rec Nou de l'Obac path, Entremesaigües, Muntanya path. This walk starts off from the old town of Escaldes-Engordany, where you can view a series of farm buildings built using granite. The route runs through the lower part of the Madriu.

Traditionally the youngest parish in Andorra was made up by the towns of Escaldes, Engordany, and Els Vilars. The occupation of the bottom of the valley and the urbanisations which have been built, especially towards Engolasters and the sunny area of Engordany which have extended the urban area until joining onto the capital and forming the country's main conurbation. The name of Escaldes refers to thermal water springs, which have been widely appreciated since ancient times.

The river system of Escaldes comprises the confluence of the two Valires, the eastern and northern ones, and the Madriu, Perafita and Claror rivers. The Basin of the Madriu includes a large number of high mountain lakes, such as the Blau, Forcat, de la Bova or the Serramitjana. The most relevant peaks within the parish are the Padern (1,858m), Tosa de Braibal (2,658m), Serramitjana (2,522 m) and Portelleta (2,905 m).

Highlighting the high altitude rain forest that climbs in altitude passing by the Boïgot spring with its large variety of deciduous trees. The Font Pixadera spring surprises visitors due to its generous and powerful flow of water.

The return stretch of the route is along the Madriu cobblestone road, a clear example of the importance of this area over the past centuries.

TECHNICAL INFORMATION

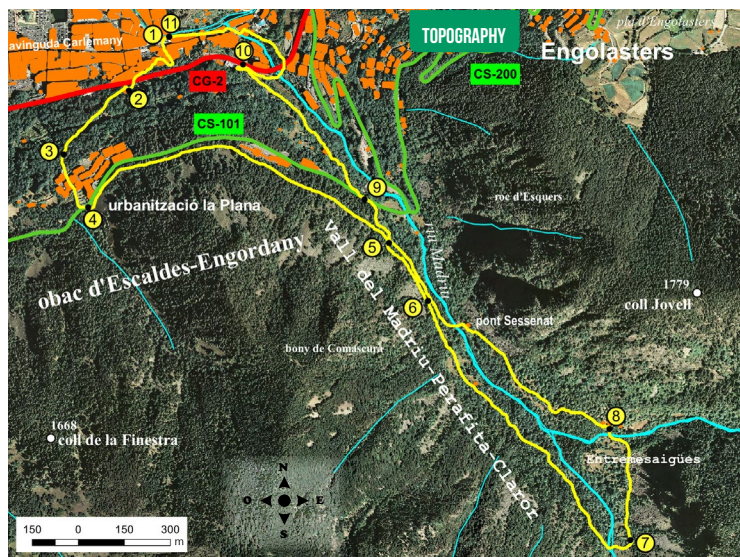
- 9H
- +560 M
-560 M
- 7.700 M
- SI
- APPROXIMATE TIME

ROUTE SIGNAGE

- GR 7 / 11
- WRONG DIRECTION
- USE OF COMPASS AND MAP HIGHLY RECOMMENDED



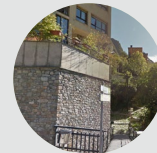
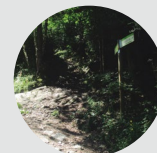
escaldes-engordany



PLACE ALTITUDE	DISTANCE ASCENT/DESCENT	TIME	COORDINATES	DESCRIPTION
1 SANTA ANNA SQUARE	-- (--)	--	N42 30.546 E1 32.545	To reach the starting point from Escaldes-Engordany, take Avinguda Carlemany until the church, where just a few metres away you'll come to Plaça Santa Anna.
2 LA PLANA PATH	310 m (+40 m)	10'	N42 30.453 E1 32.467	Cross Avinguda Carlemany and take Carrer de l'Obac until reaching Plaça de l'Obac square. After a few metres take La Plana path, as this will take you to the C.G2 road, which you must cross in order to return to La Plana path.
3 LA PLANA URBANISATION	715 m (+70 m)	25'	N42 30.340 E1 32.313	The cobblestone road is very steep. You then leave the Borda del Vicari path behind. Continue along the path until you reach La Plana Urbanisation.
4 REC NOU DE L'OBAC PATH	970 m (+100 m)	40'	N42 30.247 E1 32.373	Return to the path at the end of the urbanisation that leads to La Plana path, on the other side you will come to the Rec Nou de l'Obac path.
5 LA VALL DEL MADRIU PATH	2.150 m (+40 m)	1h	N42 30.190 E1 33.088	The trail runs parallel to the road and gradually gains altitude until passing the new Escaldes cemetery. Then you'll enter into the Madriu valley.



PLACE ALTITUDE	DISTANCE ASCENT/DESCENT	TIME	COORDINATES	DESCRIPTION
6 FONT DEL BOIGOT PATH	2.400 m (+30 m)	1h 05'	N42 30.088 E1 33.182	Continue along the GR for about 300 metres until reaching the intersection with the Font del Boigot path.
7 PERAFITA PATH	3.340 m (+280 m)	2h	N42 29.671 E1 33.669	Leave the GR behind. The route continues along the path to the Boigot spring, marked with yellow dots. You'll soon reach a typical farm building. The trail gains altitude amidst a shady forest. You must then cross the Claror and Perafita rivers over a wooden bridge and some rocks that have been placed in the form of a bridge just a few metres from the Perafita path.
8 ENTREME-SAIGÜES	3.710 m (-120 m)	2h 10'	N42 29.866 E1 33.617	Start the descent along the Perafita path, a few metres on you will come to the Font Pixadera water spring. Then cross the river Madriu. A few metres on you'll come to the Entremesaigües farm buildings.
9 LA PLANA ROUTE	6.100 m (-225 m)	2h 45'	N42 30.224 E1 33.059	Continue along the GR towards Escaldes along the cobblestone road until you reach Sassanat bridge, where you'll once again cross the Madriu river, soon after you'll reach Carretera de La Plana.
10 CTRA. CG-2 LES MOLLE-RES PATH	6.880 m (-165 m)	3h 15'	N42 30.501 E1 32.737	Cross the road and take the mountain track that has a steep slope downwards until the CG-2 road. Walk up the road about 80 metres, where you should turn onto the Les Molleres path.
11 ENGORDANY BRIDGE	7.700 m (-50 m)	3h 30'	N42 30.546 E1 32.565	Then continue beneath the road, and after a few metres you'll come to La Tosca bridge. You will have to cross Avinguda Carlemany, where you should continue alongside the river until reaching Engordany bridge.



ROUTE PROFILE

