

# 38 EL CARDEMELLER PEAK - FONT DEL BISBE FOUNTAIN ROUTE

HIKING IN ANDORRA



## DON'T MISS...

some of the *bordas* (typical Andorran farm buildings) that have been renovated and turned into restaurants (the perfect places to discover the local cuisine) and rural accommodation.

## DID YOU KNOW?

In la Massana, there is a hotel called Hotel Palanques that took in hundreds of refugees from the Second World War, who arrived via the mountains of la Massana and Ordino as they fled from the Germans and French.

## TOPONYMY

**Pal:** From the Latin *palu*, meaning “stick”. This village is close to the western border. In previous times, people could get disoriented when great snowfalls and storms hit. High and thick perches were set up to avoid this. The Catalan word *pal* forms part of many place names in the Pyrenees.



Monkshood (*Aconitum Napellus*)



La Capa highlands



Woolly thistle (*Cirsium eriophorum*)



Church of Sant Climent

This simple hike is ideal for completing with the whole family on a hot summer afternoon. Given that the route passes only 800 metres from the idyllic village of Pal, it is well worth paying a visit. You can also see the church of Sant Climent and the Romanesque interpretation centre.

The village of Pal is one of the best preserved rural settings in Andorra and forms part of a special plan to protect traditional architecture since 1997.

The church, which is the most important exponent of the architectural heritage, dates from the end of the 11th century or beginning of the 12th century, with additions from modern times. The building has a rectangular nave and conserves a significant set of Ro-

manesque walls. The bell tower, in Lombard style, has three floors of twin windows, the last of which has the only double twin windows in Andorra. Inside are a granite baptismal font; a 13th-century Romanesque statue of the Blessed Virgin of Remei; two processional, multicoloured wooden crosses; and an altarpiece dedicated to Pope Saint Clement, for whom the church is named (1709).

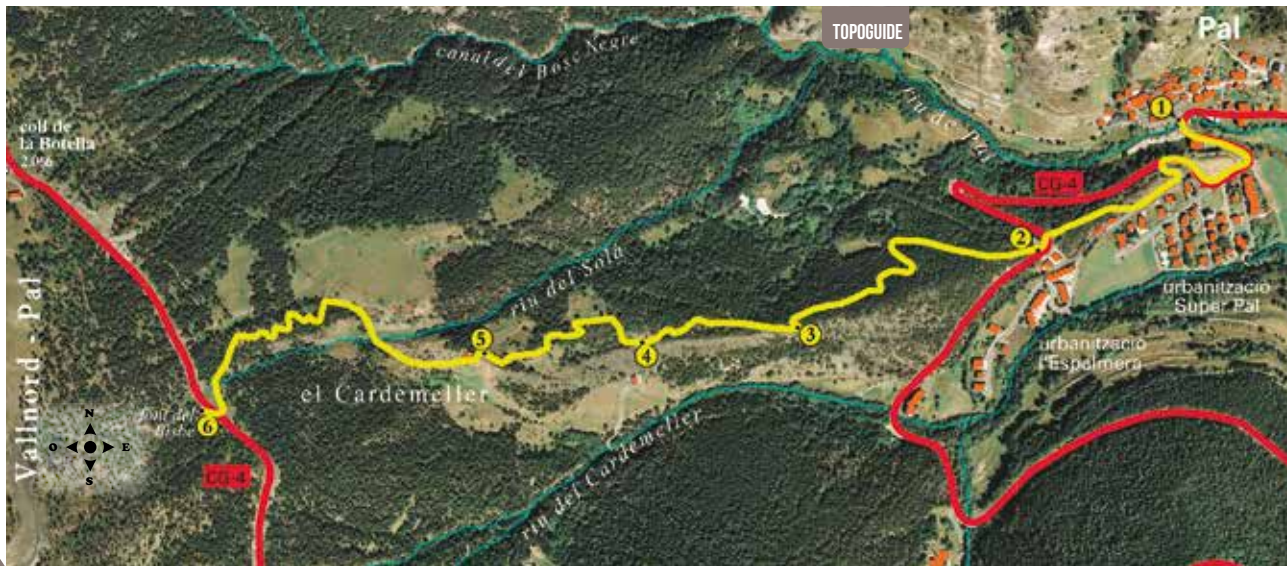
In less than an hour, the route will enable you to enjoy the typical Andorran huts of El Cardameller, a testimonial vestige of the pastoral life of yesteryear. In addition, you'll pass through grassy meadows and forests of Scots pine (*Pinus sylvestris*) until you arrive at Bisbe fountain, a resting place with a barbecue grill and a fountain where you can drink pure and fresh mountain water.

# 38



# LA MASSANA

## 38. EL CARDEMELLER PEAK - FONT DEL BISBE FOUNTAIN ROUTE



### DATA SHEET



1H 30 MIN

50 MIN

+435M

2.130 M

NO\*

APPROXIMATE WALKING TIMES

### ROUTE SIGNPOSTING



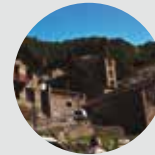
WRONG WAY



La Massana

Andorra  
www.visitandorra.com

| LOCATION                         | HEIGHT  | DISTANCE DROP      | TIME | COORDINATES             | DESCRIPTION   |
|----------------------------------|---------|--------------------|------|-------------------------|---|
| <b>1</b><br>CAR PARK PAL VILLAGE | 1591 m  | --<br>(--)         | --   | N42 32.437<br>E1 28.289 | Follow CG-4 towards Pal. Park in the town centre and head northward. Before you reach the Super-Pal residential area, you'll find a trail to the right that will take you straight to the start of the path.  |
| <b>2</b><br>INTERSECTION         | 1.738 m | 797<br>(+147)      | 20'  | N42 32.557<br>E1 28.063 | Walk along a trail for about 20 metres and then take a fairly wide path that goes to the left. This is a rocky path that goes straight into a Scots pine forest. Follow the way, marked by yellow dots, leaving behind a series of small paths until you come to an intersection. |
| <b>3</b><br>CLEARING             | 1.783 m | 831 m<br>(+45 m)   | 35'  | N42 32.544<br>E1 27.894 | Follow the path on the right, which will break level for a few metres, and then start climbing again until you reach a clearing with views of the Pal ski resort.   |
| <b>4</b><br>MOUNTAIN HUT         | 1.865 m | 1.190 m<br>(+82 m) | 55'  | N42 32.534<br>E1 27.723 | Continue the ascent along the track for a little over a kilometre. To the left you'll see a small cluster of houses; the mountain refuge is among them. There's also a path leading up to the Pal-Vallnord ski resort.  |



| LOCATION                   | HEIGHT  | DISTANCE DROP       | TIME   | COORDINATES             | DESCRIPTION  |
|----------------------------|---------|---------------------|--------|-------------------------|--|
| <b>5</b><br>BISBE FOUNTAIN | 2.026 m | 1.910 m<br>(+161 m) | 1h 30' | N42 32.486<br>E1 27.416 | Follow the wide path on the right, leaving another on the left that leads to the El Cardemeller cirque. You'll pass by some meadows and push into a forest until you come upon the CG-4. Cross the road and you'll arrive at the Bisbe fountain. From this point, the panoramic views of Casamanya peak, the La Capa highlands and the Pal ski resort are exquisite. |



\*You can return either by following the same path or along the CG-4 or the Camí de Setúria path.

### ROUTE PROFILE

